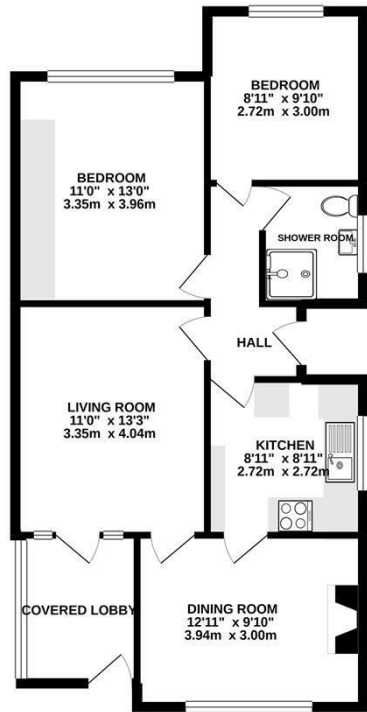




**Keith
Ashton**

Pilgrims Close, Pilgrims Hatch
Brentwood

GROUND FLOOR
717 sq.ft. (66.6 sq.m.) approx.



TOTAL FLOOR AREA: 717 sq.ft. (66.6 sq.m.) approx.
Whilst every attempt has been made to ensure the accuracy of the floorplan contained here, measurements of doors, windows, rooms and any other items are approximate and no responsibility is taken for any error, omission or mis-statement. This plan is for illustrative purposes only and should be used as such for any prospective purchase. The services, systems and appliances shown have not been tested and no guarantee as to their operability or efficiency can be given.
Made with Metreapp ©2022

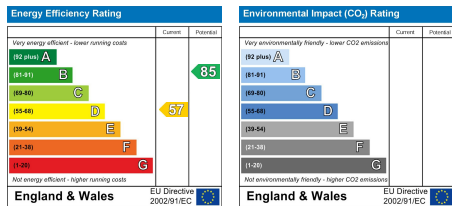


3 Pilgrims Close, Pilgrims Hatch, Brentwood, CM15 9RQ

We are pleased to bring to the market this lovely two-bedroom bungalow situated in a quiet cul de sac in the popular location of Pilgrims Hatch. This property boasts two double bedrooms, two reception rooms, a front & rear garden and a driveway. We feel that the property would make an ideal project for a first-time buyer or investment purchase.

This property has the added benefit of no onward chain.

Guide Price £425,000



SERVICES:

Local Authority: Brentwood
Council tax band: D
Post code: CM15 9RQ

VIEWING:

Strictly by prior arrangement with Keith Ashton Estate Agents

OPENING HOURS:

Monday to Friday: 8.45AM - 6.30PM | Saturdays: 9AM - 5.30PM | Sundays: 10AM - 2PM

MORTGAGE INFORMATION:

We offer the additional facility of an in-house Independent Financial Adviser who will access all mortgage lenders with the purpose of providing you with the benefit of choice. For quotations or comparables please call 01277 260858 or visit our interactive website at www.mortgagebusiness.net



We the Agent have not tested any apparatus, fittings or services for this property. The plot size is intended merely as a guide and has not been officially measured or verified by the Agent. Photographs are for illustration only and may depict items which are not for sale or included in the sale of the property. As part of the service we offer we may recommend ancillary services to you which we believe may help you with your property transaction. We wish to make you aware, that should you decide to use these services we will receive a referral fee. For full and detailed information please visit 'terms and conditions' on our website www.keithashton.co.uk

Brentwood
Tel. 01277 260858

Village Office
Tel. 01277 375757

Lettings Office
Tel. 01277 202200

Explore more @ www.keithashton.co.uk

